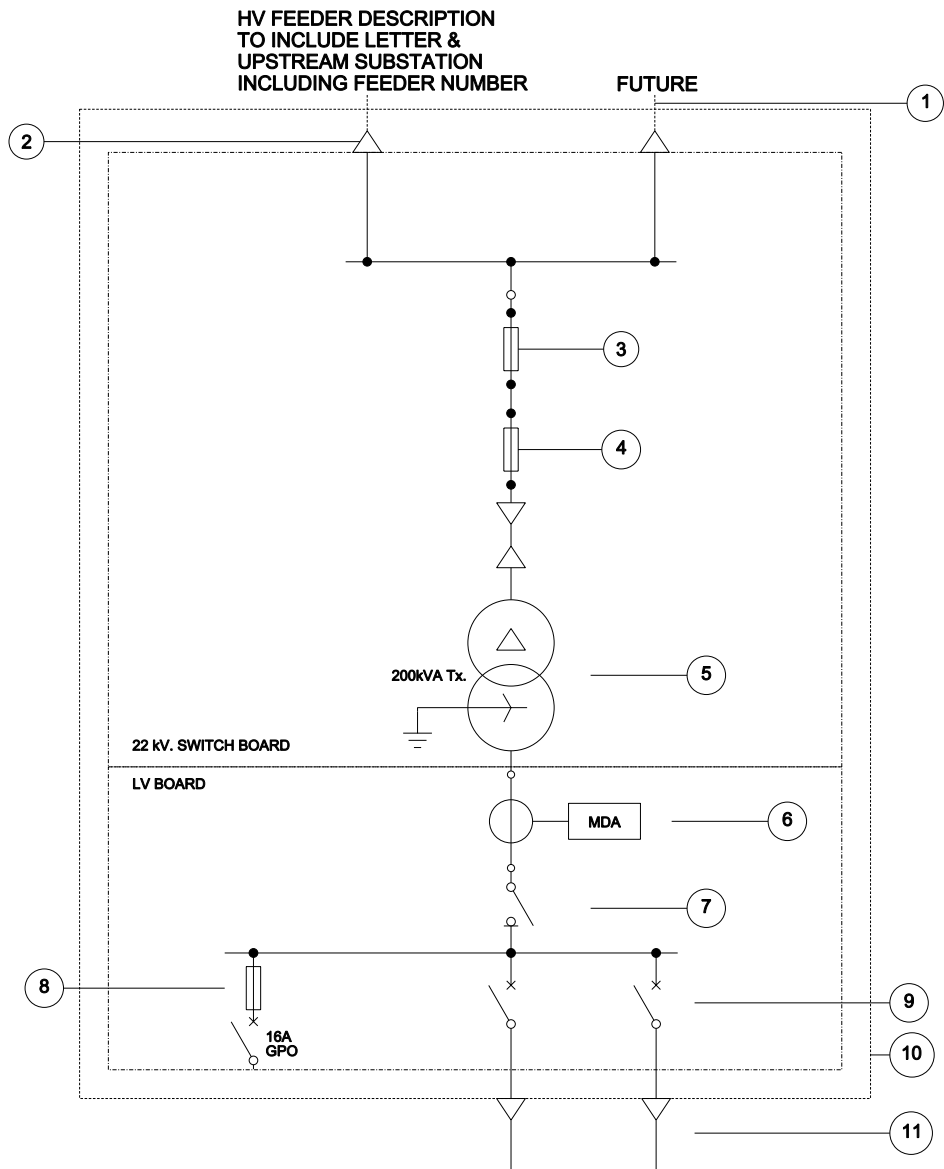




CAUTION : Printed document is uncontrolled.



ITEM No.		No. OFF	MANUFACT. TYPE/REF.	RATINGS	NOTES
1	CABLE	1	STOCK	22kV	185 a 3/c xshc pvc hdpe 22kV
2	CABLE TERMINATION	1	STOCK	22kV	AUSTRAMOLD 200A LOAD BREAK ELBOW
3	HV FUSE	3		200A	INTERNAL IN TRANSFORMER TANK
4	HV FUSE (INTERNAL)	3		40A	BAYONET TYPE EXTERNALLY ACCESIBLE
5	TRANSFORMER	1		200kVA 2200/433-250 V	FF LOAD TRAPS ±5% ±2.5% OF NORMAL VOLTAGE
6	MD AMMETERS	3		800/5 CTS	
7	ISOLATOR	1x3	JEAN-MULLER	1000A	
8	FUSE	1			GPO SUPPLY
9	CIRCUIT BREAKER	2	TERASAKI XS125NJ	400A C/B	
10	ENCLOSURE		WILSON		PADMOUNT S/S
11	CABLE	4	STOCK	1kV	

ALTERATIONS	 TasNetworks		TasNetworks PTY. LTD. ABN: 24 167 357 299		© COPYRIGHT - TASNETWORKS PTY. LTD. NO PART OF THIS DRAWING MAY BE REPRODUCED, STORED IN A RETRIEVAL SYSTEM IN ANY FORM, OR TRANSMITTED BY ANY MEANS WITHOUT PRIOR PERMISSION OF TASNETWORKS.	
	DIMENSIONS ARE IN MILLIMETRES. UNLESS OTHERWISE STATED.		TITLE MINI KIOSK SUBSTATION ELECTRICAL SCHEMATIC			SCALES NTS
	DRAWN	C5 PRO-SOLUTIONS				SIZE A4
	CHECKED	G. HALL	KS-328			REVISION A
	APPROVED	 DAVID ELLIS DATE 05/02/2016				

07/12/2015